

Table of Contents

Introduction	1
Creating a Workscreen	1
Changing the Layout	1
Adding Some Functionality	9
Giving the Application the Final Touch	10
The Finished Application	11

Version: 5.1.2 / 2019-12-09

Introduction

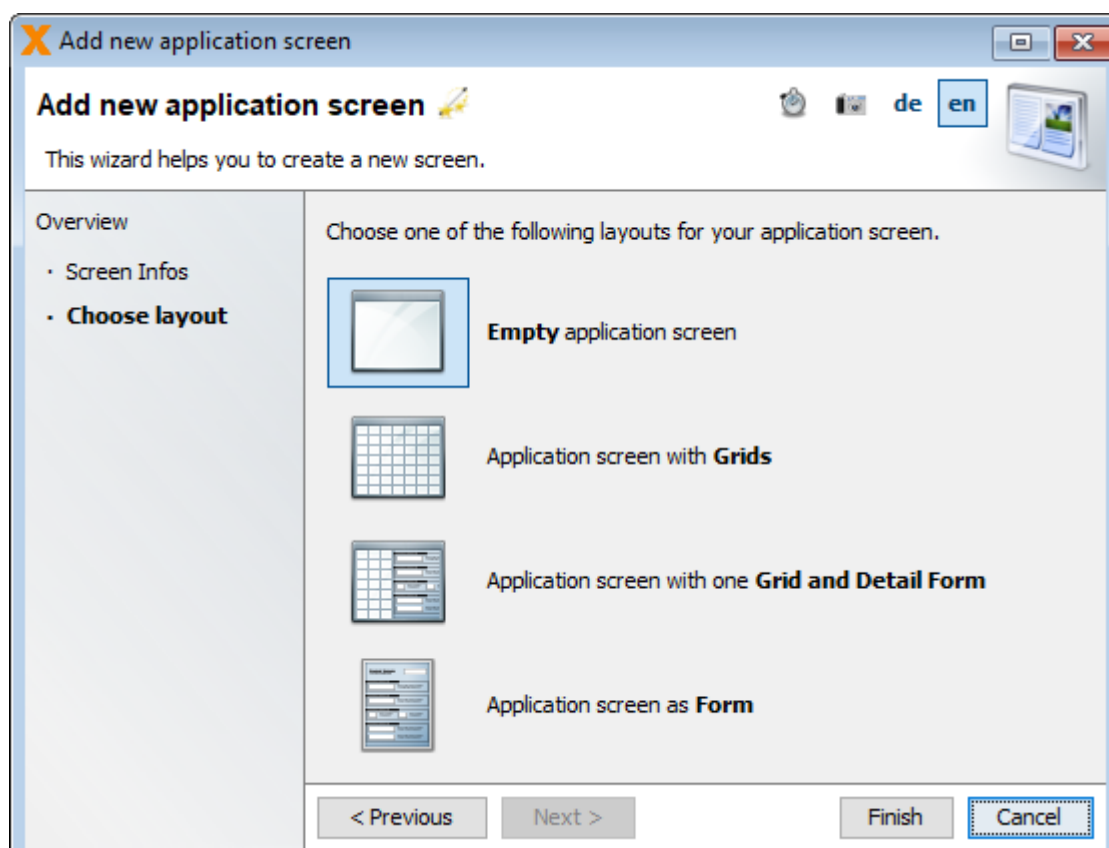
The objective of this tutorial is the creation of a modern web application with VisionX. It is assumed that a VisionX project is already available.

Creating a Workscreen

First, we need to create a workscreen in VisionX. Press the “New Screen” button (1) fill in a name and click “Next” (2).



In the following wizard, select “Empty application screen” and press “Finish” to create an empty screen.



Changing the Layout

For our modern web application, we use a so-called “Editing Panel” to edit customer data.

In the “Elements” area, pick up an “Editing Panel” (1) and drag it (2) into the center of our newly

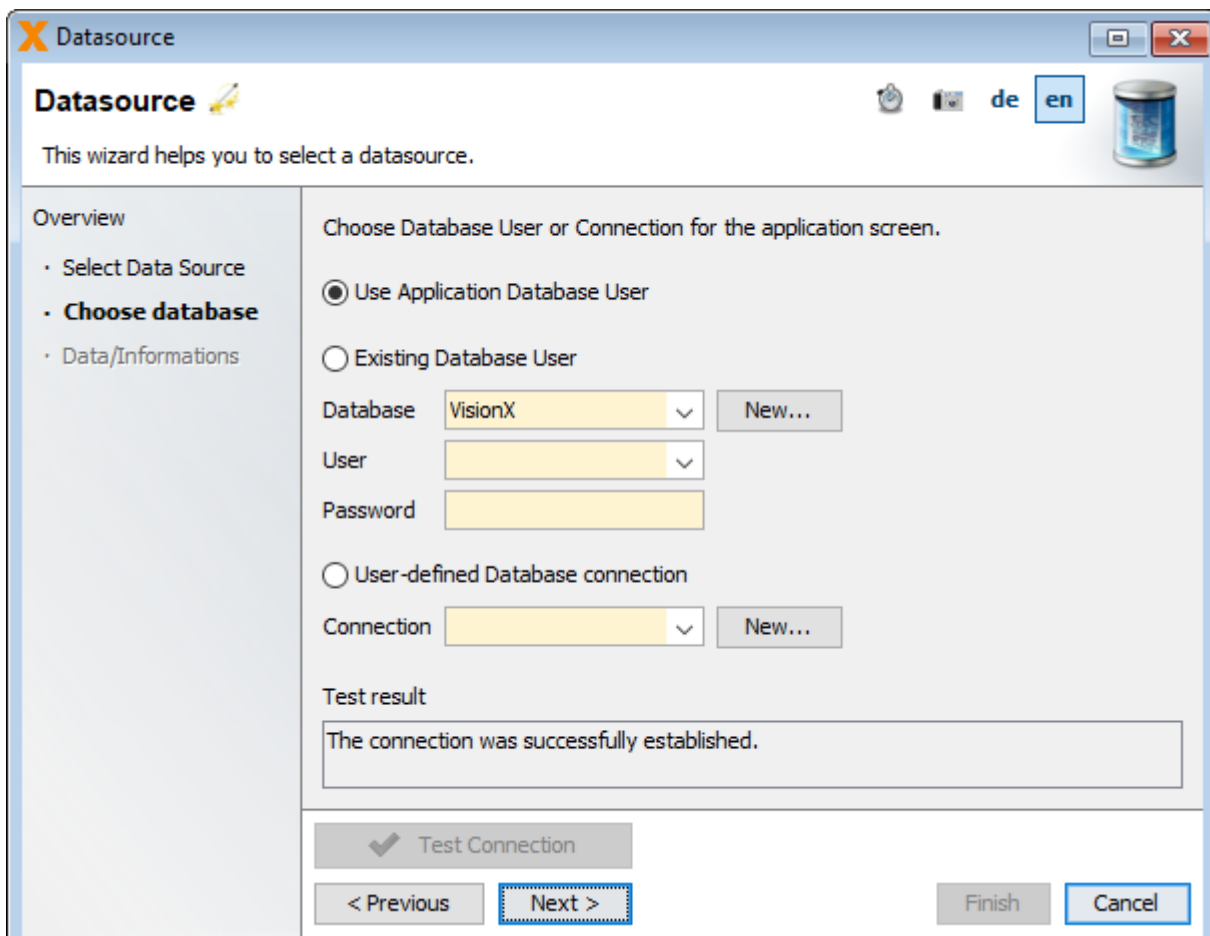
created screen.



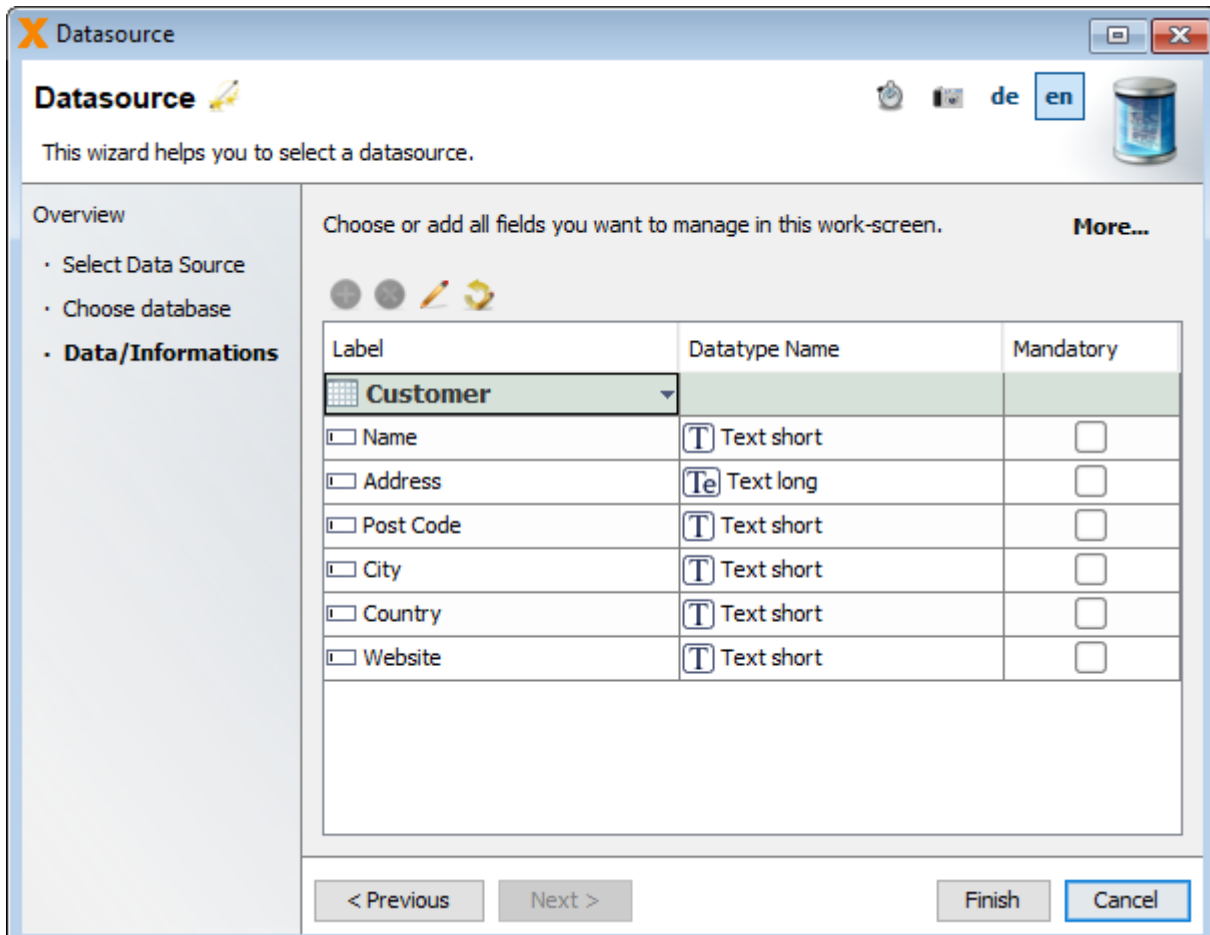
For our next step, we need a table to store our customer data in. For this purpose, click the green plus in the bottom of your VisionX designer under the label “NEW Table” (1). For this tutorial, let's assume we already have a customer table available in our database. If you don't have an existing customer table, simply create a new screen with demo customers from [this](#) spreadsheet. In the Datasource Wizard, we, therefore, select the “Use existing data from database tables” option (2). Press next (3) to continue.



The customer table is available in the applications database, so we select the “Use Application Database User” option for the connection.



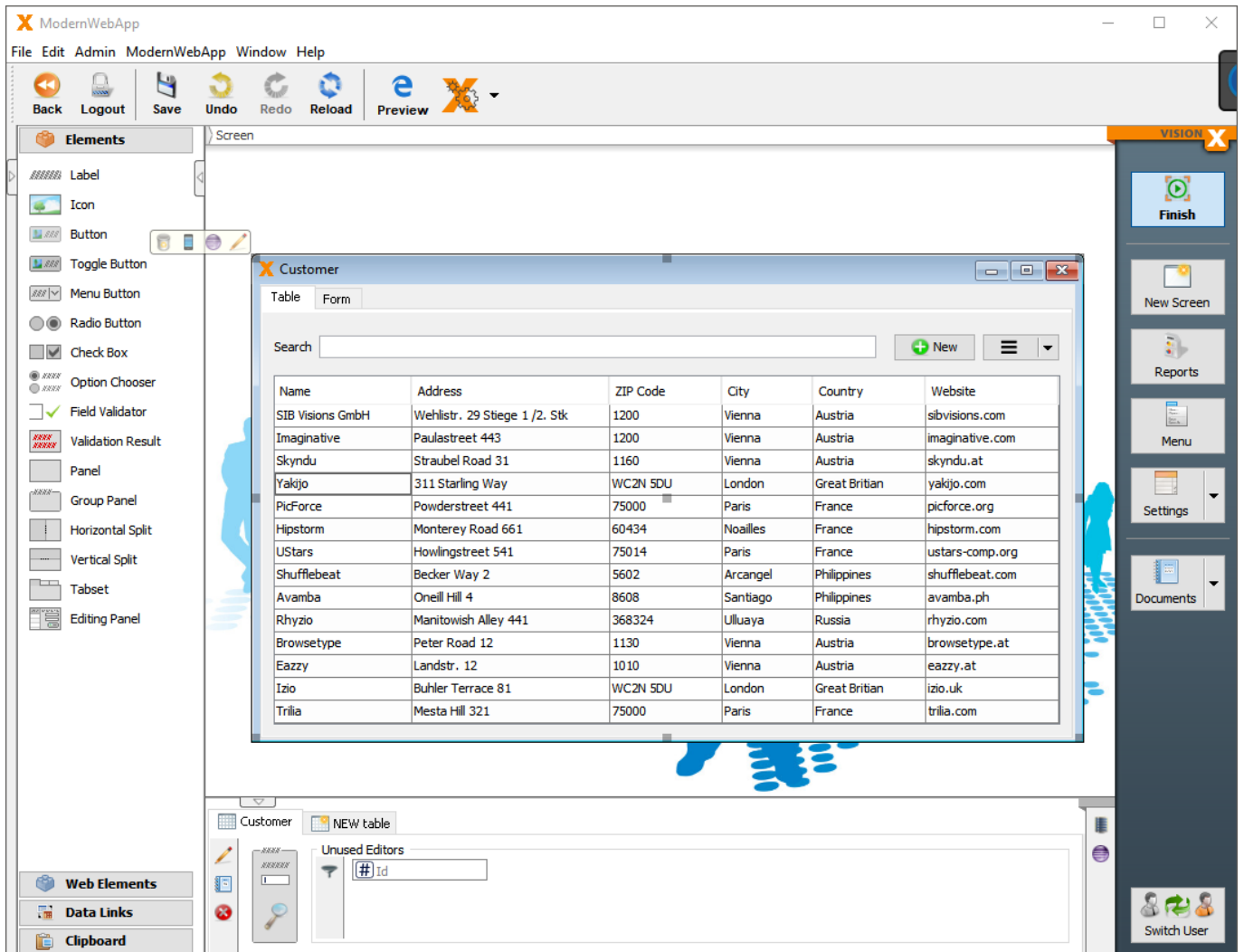
In the third step, we select the company table in the table dropdown and finish the creation of the table with “Finish”.



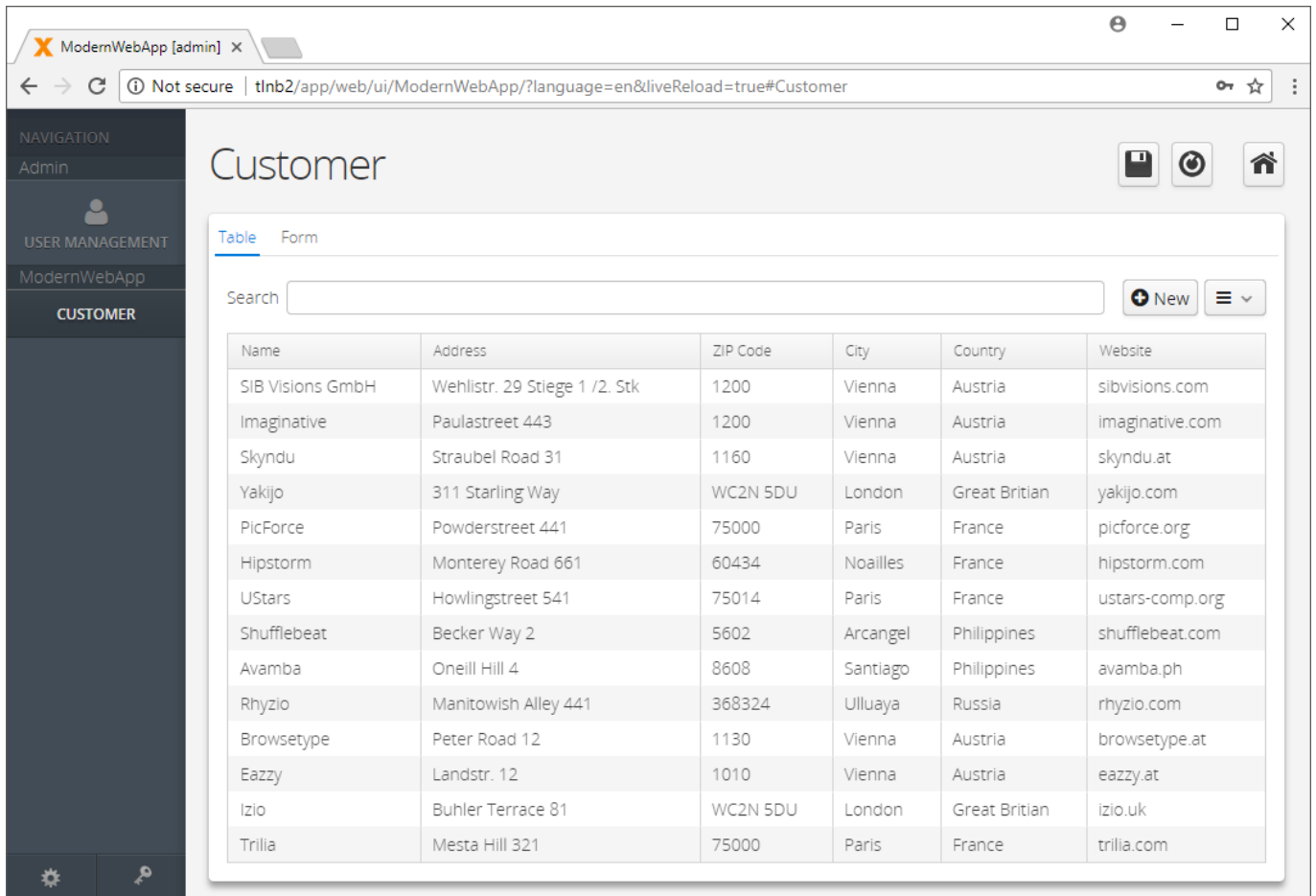
Having created the table, we can now start with the layout of our screen. In this step, we add the table (1) to our panel. Furthermore, we add a search bar (2) and an insert button from the “Web Elements” (3) to create a new customer.



This is how our screen should look in the designer by now:



With this being done, we can now see what our application looks like via the VisionX Live Preview:

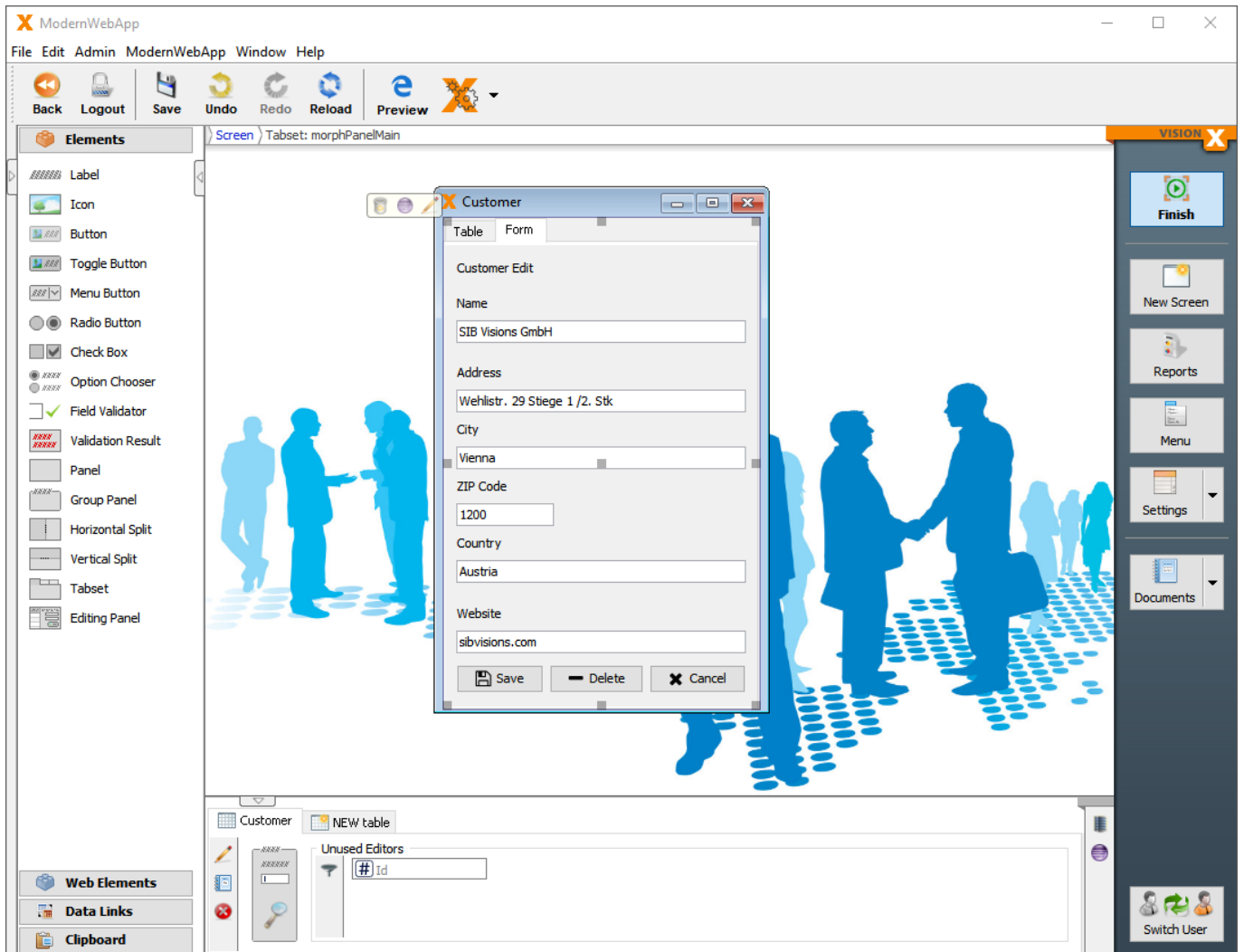


After this, our layout for the master screen is done.

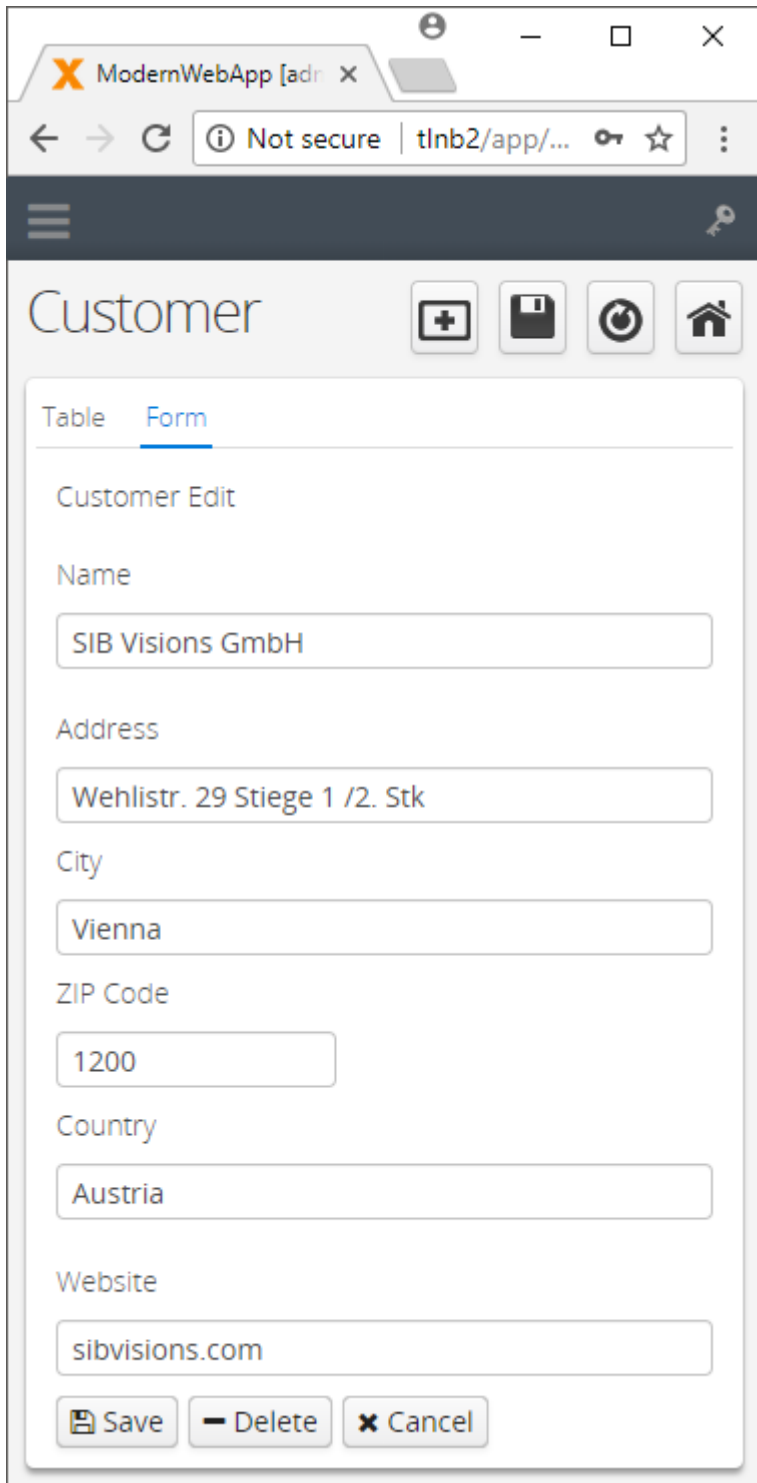
Now we can start creating the form to manage the customer data. For this, we select the “Form” tab in our editing panel. Next, we need to add a panel in the center of this tab. From the lower part of the designer, we can now select our unused editors (1) and drag them into our panel. After our editors are set in place, we add some labels (2) and a panel with the three “Web Element” (3) buttons “Save”, “Delete” and, “Cancel” on the bottom.



Once again, this is how it should look in the designer:



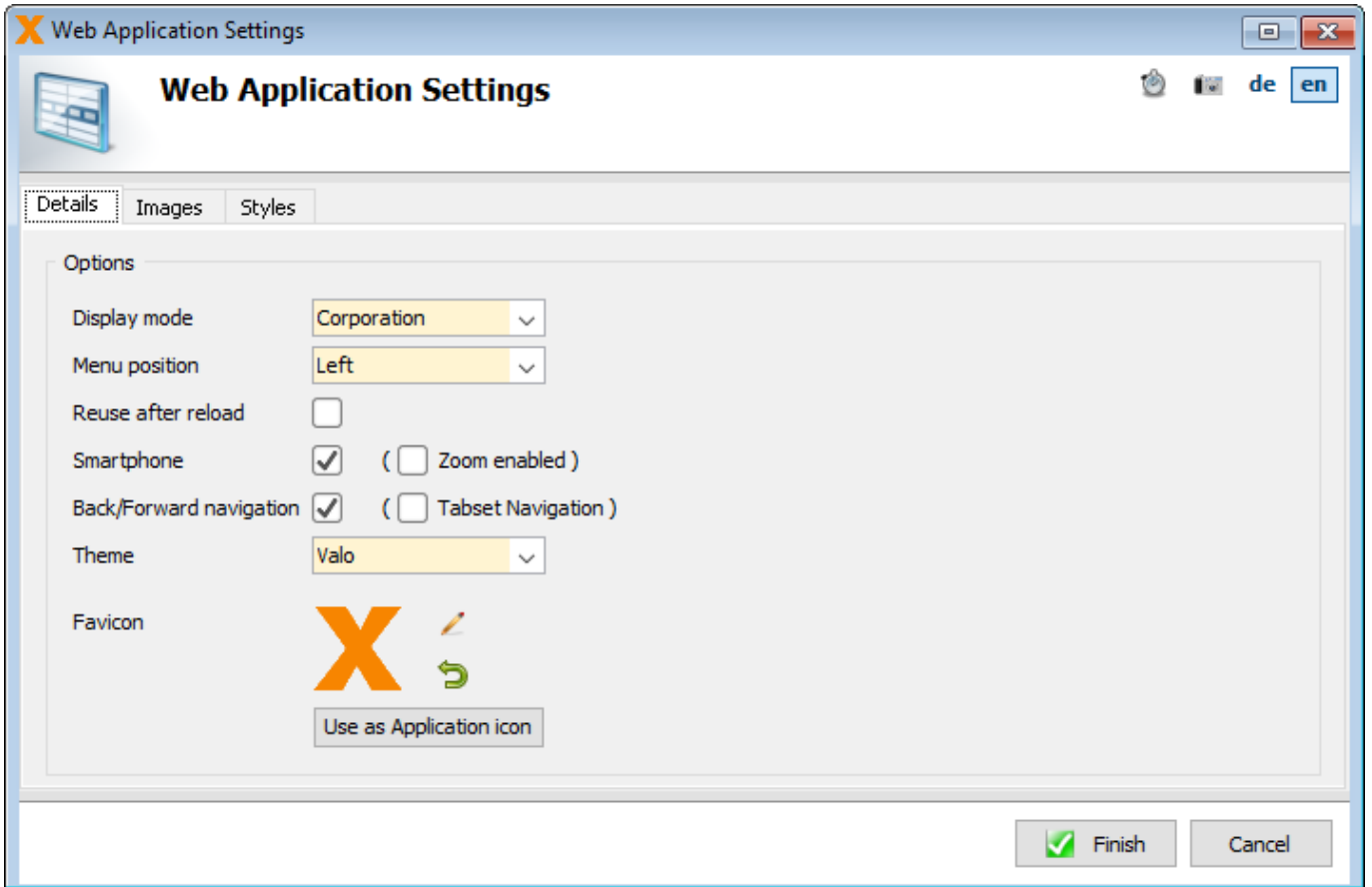
After having set everything in place, this is how our form looks in the Live Preview:



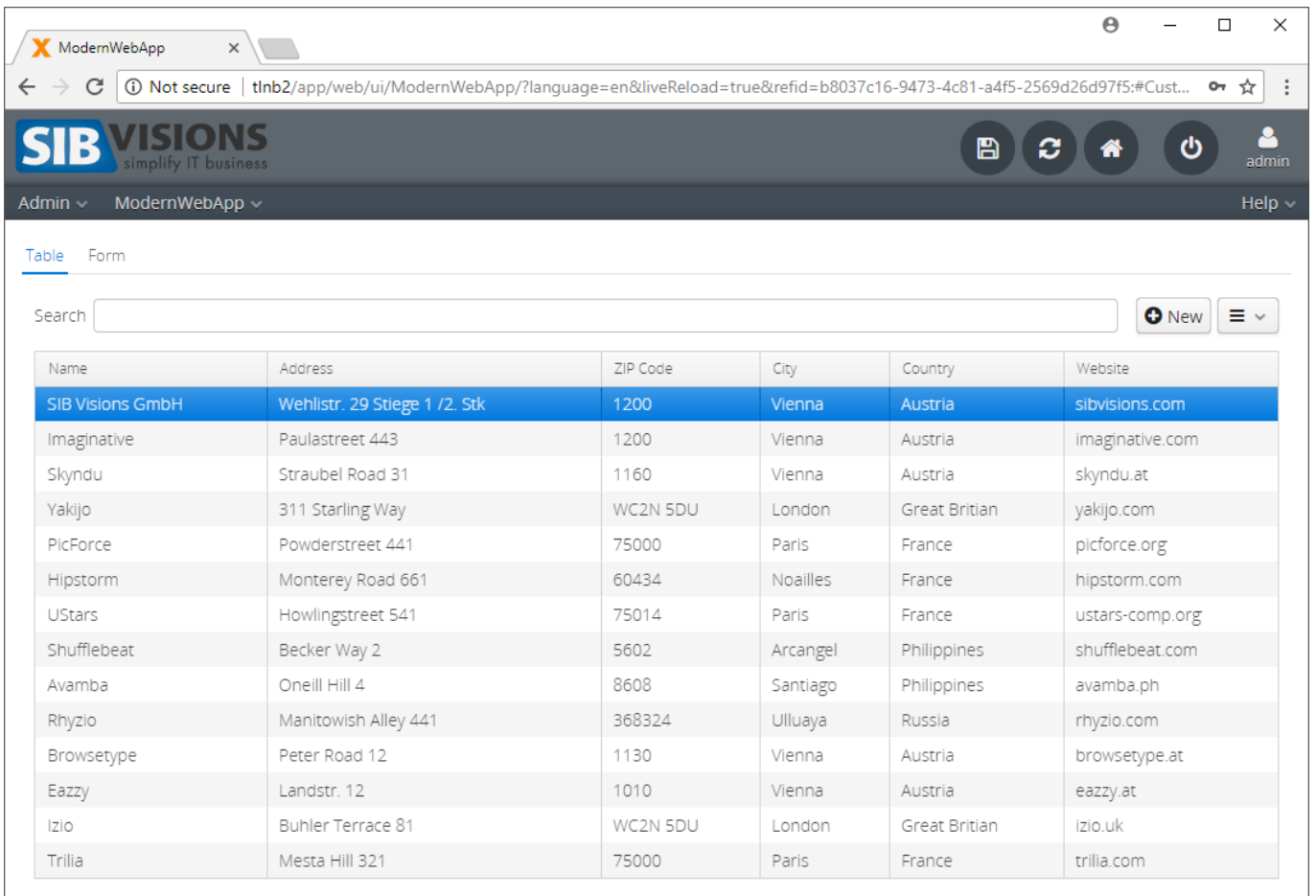
To give our application a nice and modern look, we are going to change the design in VisionX. For this, we select the dropdown next to "Settings" in the right VisionX toolbar and press "Web" (1).



In the following wizard, change the "Display mode" to "Corporation".



This is how our screen looks with the corporation mode now:



Adding Some Functionality

Now that we have the layouts done, we can start to implement some functionality for our application. Most of this is done implicitly by the “Web Elements” buttons we added.

The “New” button adds a new Customer and selects the “Form” tab to edit it.

The “Save” button saves the currently selected Customer and selects the “Table” tab.

The “Delete” button deletes the currently selected Customer and selects the “Table” tab.

The “Cancel” button reverts the changes done to the currently selected Customer and selects the “Table” tab.

As the next step, we have to remove the navigation of the editing panel and set the display mode to “Inline”. This settings will change the layout of the panel from Tabset to Panel without Tabs. Every click in the table will show the Form. To do this, we have to select the editing panel and click on the edit icon (1). In the menu, we deselect “Show Navigation” (2) and change the “Display Mode” to “Inline” and “Navigation Mode” to “Single Click” (3).

The screenshot shows the ModernWebApp interface. The main window displays a table of customers with columns: Name, Address, ZIP Code, City, Country, and Website. The table contains 15 rows of customer data. A red circle labeled '1' highlights the edit icon on the first row. The left sidebar shows the 'Elements' panel with a 'Form' tab selected. A red circle labeled '2' highlights the 'Show Navigation' checkbox, which is unchecked. A red circle labeled '3' highlights the 'Display mode' dropdown menu, which is set to 'Single Click'. The bottom right corner shows a 'Switch User' button.

Name	Address	ZIP Code	City	Country	Website
SIB Visions GmbH	Wehlstr. 29 Stiege 1/2. Stk	1200	Vienna	Austria	sibvisions.com
Imaginative	Paulastreet 443	1200	Vienna	Austria	imaginative.com
Skyndu	Straubel Road 31	1160	Vienna	Austria	skyndu.at
Yakijo	311 Starling Way	WC2N 5DU	London	Great Britain	yakijo.com
PicForce	Powderstreet 441	75000	Paris	France	picforce.org
Hipstorm	Monterey Road 661	60434	Noailles	France	hipstorm.com
UStars	Howlingstreet 541	75014	Paris	France	ustars-comp.org
Shufflebeat	Becker Way 2	5602	Arcangel	Philippines	shufflebeat.com
Avamba	Oneill Hill 4	8608	Santiago	Philippines	avamba.ph
rhyzio	Manitowish Alley 441	368324	Ulluya	Russia	rhyzio.com
browsetype	Peter Road 12	1130	Vienna	Austria	browsetype.at
eazzy	Landstr. 12	1010	Vienna	Austria	eazzy.at
Izio	Buhler Terrace 81	WC2N 5DU	London	Great Britain	izio.uk
Trilia	Mesta Hill 321	75000	Paris	France	trilia.com

Giving the Application the Final Touch

To give our modern web application the final touch, we have to make some changes in the source code itself. For this, we are going to make the table readonly. Most web applications don't show the selected row in a table, so we are going to disable that as well.

```
//disable selection, set table readonly
tableCustomer.setShowSelection(false);
tableCustomer.setEditable(false);
```

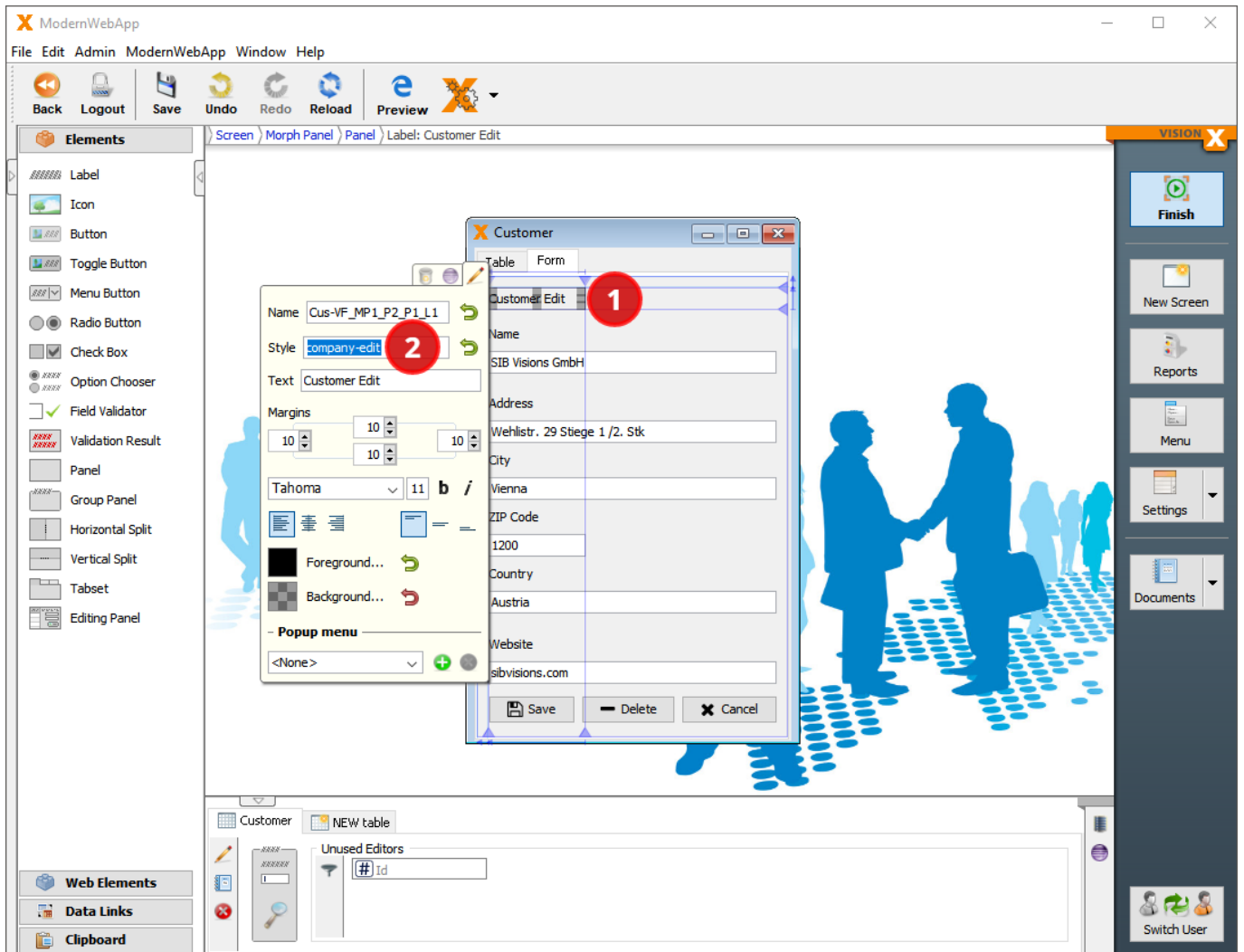
We are also going to add a menu button next to the “New” button that lets us delete a row and export the table. For this, we grab the “Menu Button” from the “Web Elements” and position where we want it to be. Additionally, we are going to add some margins between the search bar and the buttons.

To change up the design a bit, we are going to add edit the stylesheet of this application in order to style the title of our form. For this, we once again open the “Web” settings in VisionX like we did when changing the “Display mode” (Settings → Web). In the following wizard, we select the “Style” tab and set the font-size to 20px and the font to “OpenSans”.

```
.company-edit
{
  font-family: OpenSans;
  font-size: 20px;
}
```



To set the style, we have to edit the label (1), which is, once again, done by pressing the edit button. Set the style to “company-edit” (2), and we are done.



The Finished Application

With this done, let's look at how our application is looking in a web environment. For this, we, once again, use the "Preview" button in VisionX. This will start a browser window that shows our finished application:

ModernWebApp

tlmb2/app/web/ui/ModernWebApp/?language=en&liveReload=true&refid=9999a78c-619b-4306-a6aa-8bfe667b4fdc:#Customer

SIB VISIONS
simplify IT business

Admin ModernWebApp Help

Search + New ≡

Name	Address	ZIP Code	City	Country	Website
SIB Visions GmbH	Wehlstr. 29 Stiege 1 /2. Stk	1200	Vienna	Austria	sibvisions.com
Imaginative	Paulastreet 443	1200	Vienna	Austria	imaginative.com
Skyndu	Straubel Road 31	1160	Vienna	Austria	skyndu.at
Yakijo	311 Starling Way	WC2N 5DU	London	Great Britian	yakijo.com
PicForce	Powderstreet 441	75000	Paris	France	picforce.org
Hipstorm	Monterey Road 661	60434	Noailles	France	hipstorm.com
UStars	Howlingstreet 541	75014	Paris	France	ustars-comp.org
Shufflebeat	Becker Way 2	5602	Arcangel	Philippines	shufflebeat.com
Avamba	Oneill Hill 4	8608	Santiago	Philippines	avamba.ph
Rhyzio	Manitowish Alley 441	368324	Ulluya	Russia	rhyzio.com
Browsetype	Peter Road 12	1130	Vienna	Austria	browsetype.at
Eazzy	Landstr. 12	1010	Vienna	Austria	eazzy.at
Izio	Buhler Terrace 81	WC2N 5DU	London	Great Britian	izio.uk
Trilia	Mesta Hill 321	75000	Paris	France	trilia.com

Customer Edit

Name

Address

City

ZIP Code

Country

Website

From:
<https://doc.sibvisions.com/> - **Documentation**

Permanent link:
https://doc.sibvisions.com/visionx/modern_web_application



Last update: **2021/11/18 11:29**